

# The Children and Teenagers Foundation, Inc.

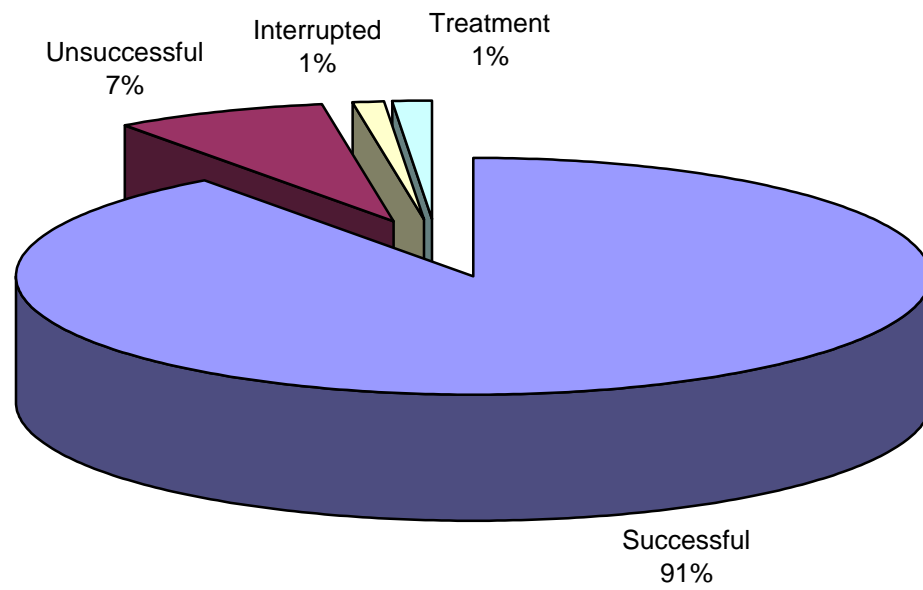
## Program Statistics 2004

Outcomes		Geographical		Vendor		Service Type		Ethnicity	
Interrupted	1	Clayton	9.1	DFCS	35	BA	7.41	African American	85
Successful	91	Cobb	4.0	DJJ	47	BI	2.16	White	12
Treatment	1	Dekalb	59.0	Juvenile Courts	17	CB	3.24	Other	3
Unsuccessful	7	Fulton	6.8	Private Pay	0	DA	2.31	<b>TOTAL</b>	<b>100%</b>
<b>TOTAL</b>	<b>100%</b>	Gwinnett	3.7	Other	1	DFCS-CI	2.47		
		Henry	11.7	<b>TOTAL</b>	<b>100%</b>	DJC-CI	16.51		
		Jackson	0.5			FPBP C & F	11.57		
		Newton	2.1			FA	4.01		
		Rockdale	1.9			FTM	0.31		
		Walton	1.2			HS	3.24		
		<b>TOTAL</b>	<b>100%</b>			IH	31.34		
						IHCM	4.63		
						IHIT	5.25		
						PA	0.46		
Gender		Family Size (# of children)		Age Group		PA		Diagnosis	
		0 - 1	23	4 and under	9	CI	5.09	Disruptive Behavior Disorder	14
Female	44	2 - 3	49	5 thru 12	32	<b>TOTAL</b>	<b>100%</b>	Substance Abuse	5
Male	56	4 - 6	19	13 thru 18	49			Anxiety Disorder	1
<b>TOTAL</b>	<b>100%</b>	7 - 10	9	19 and older	10			Sexual Dysfunction	1
		<b>TOTAL</b>	<b>100%</b>	<b>TOTAL</b>	<b>100%</b>			Developmental Mood Disorder	4
								Mood Disorder	5
								Psychotic Disorder	1
								Other	4
								None	65
								<b>TOTAL</b>	<b>100%</b>
Family Status				Income Range					
Foster Placement	10.91			0 - 10K	33				
Intact	26.67			11 - 15K	15				
Relative Placement	10.61			16 - 20K	20				
Single Parent	51.52			21K+	32				
Other	0.30			<b>TOTAL</b>	<b>100%</b>				
<b>TOTAL</b>	<b>100%</b>								

\* The numbers listed in each category represent the percentage of program participants.

# Program Statistics

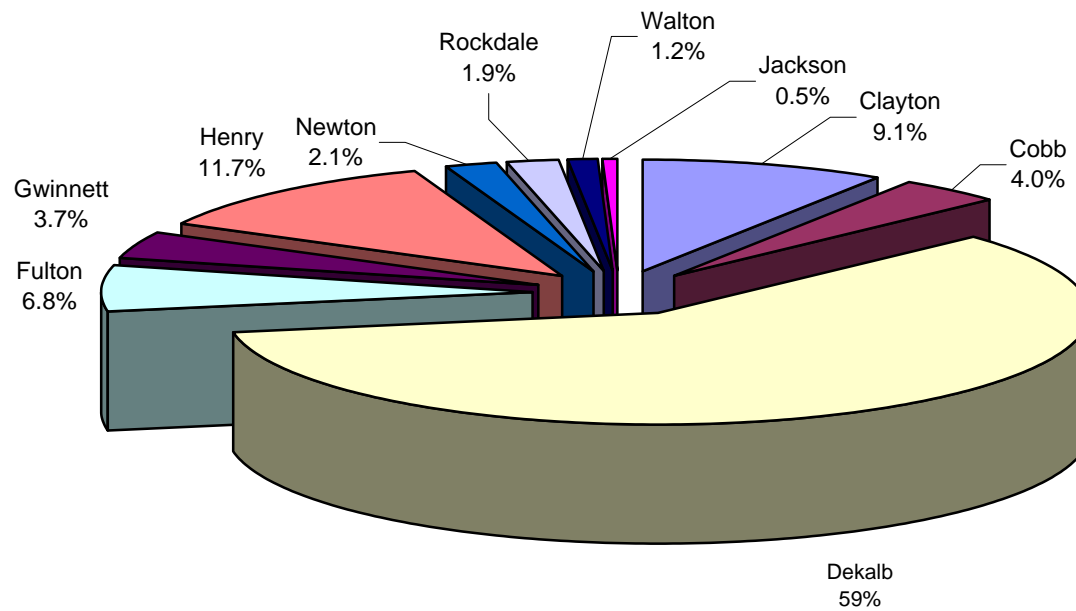
## Annual Case Outcomes 2004



# Program Statistics

## Geographical Location

### 2004

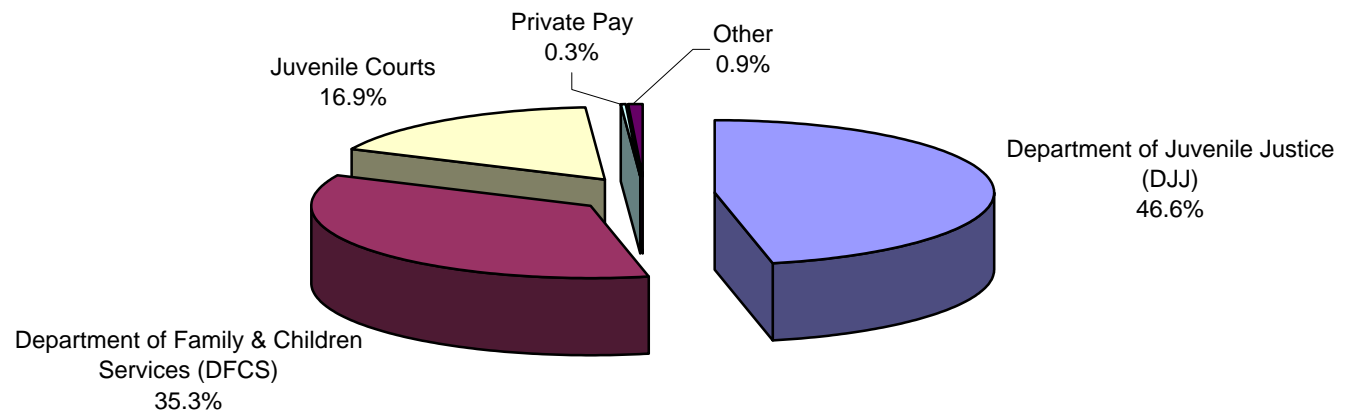


\*Please note that these statistics were created from a representative sample of the population that we served.

# Program Statistics

## Referral Source

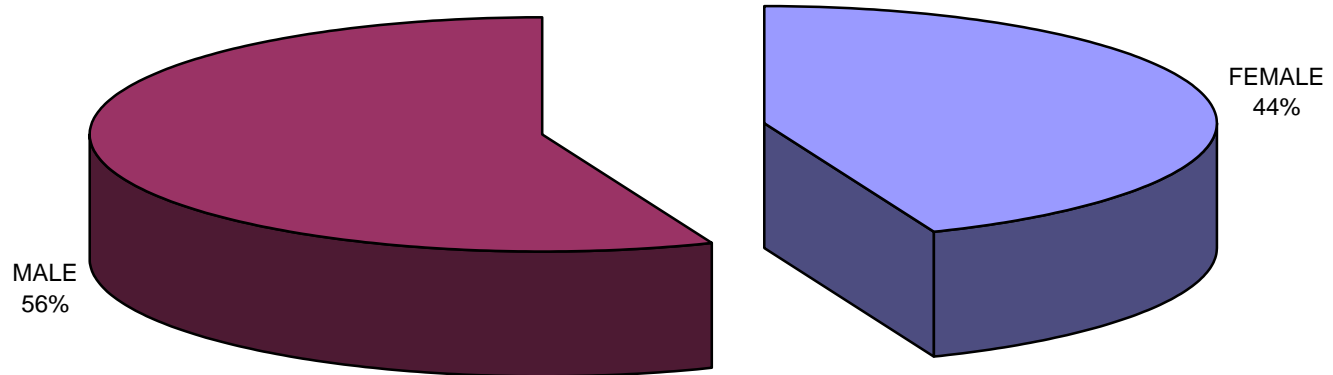
### 2004



\*Please note that these statistics were created from a representative sample of the population that we served.

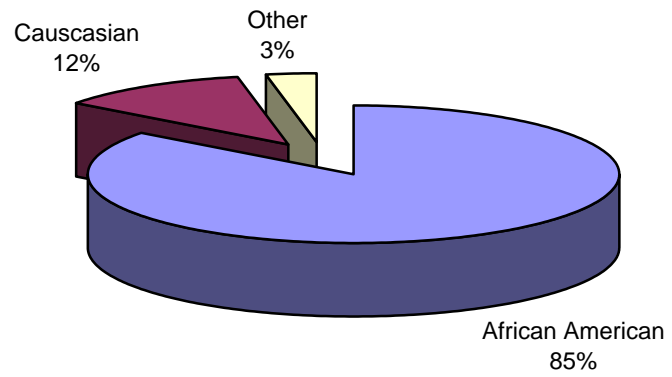
## Program Statistics

*Gender*  
*2004*



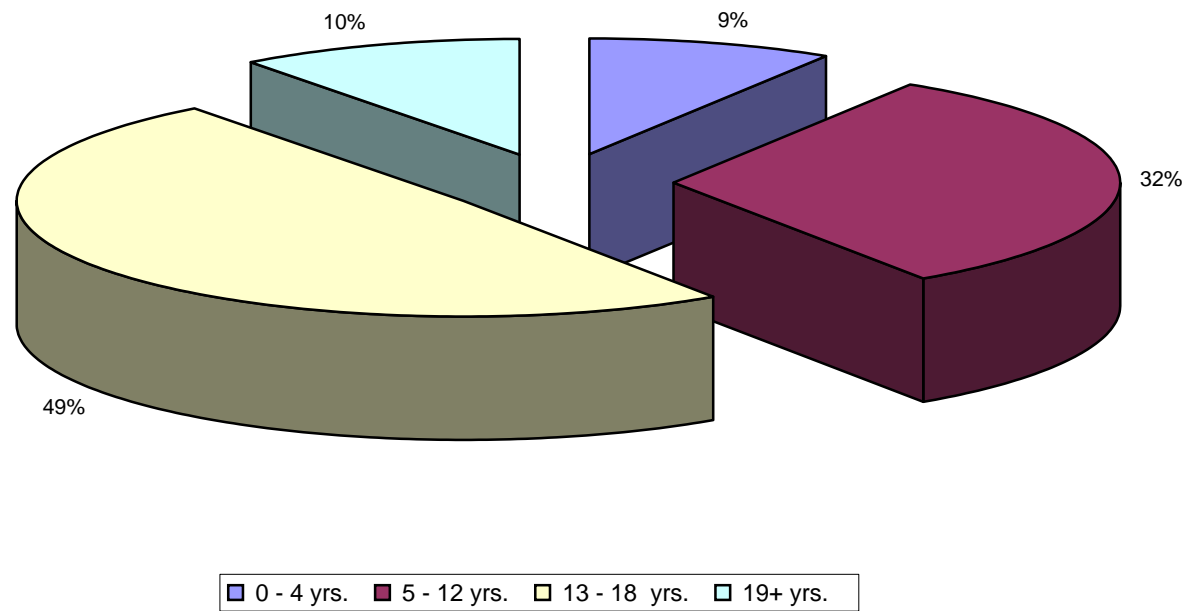
\*Please note that these statistics were created from a representative sample of the population that we served.

**Program Statistics**  
***Ethnicity***  
**2004**



\*Please note that these statistics were created from a representative sample of the population that we served.

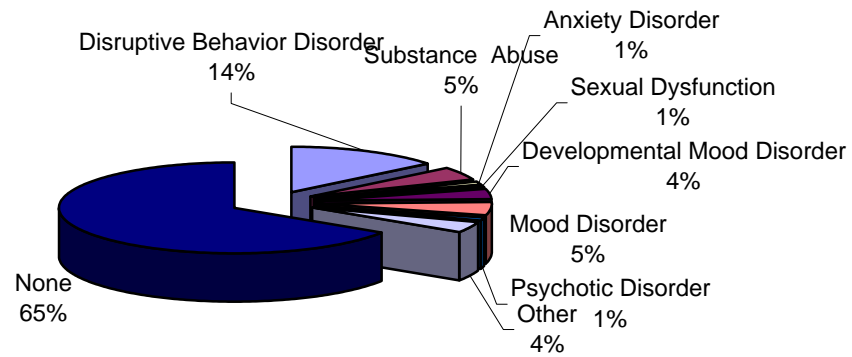
**Program Statistics**  
**Age Group**  
**2004**



\*Please note that these statistics were created from a representative sample of the population that we served.

# Program Statistics

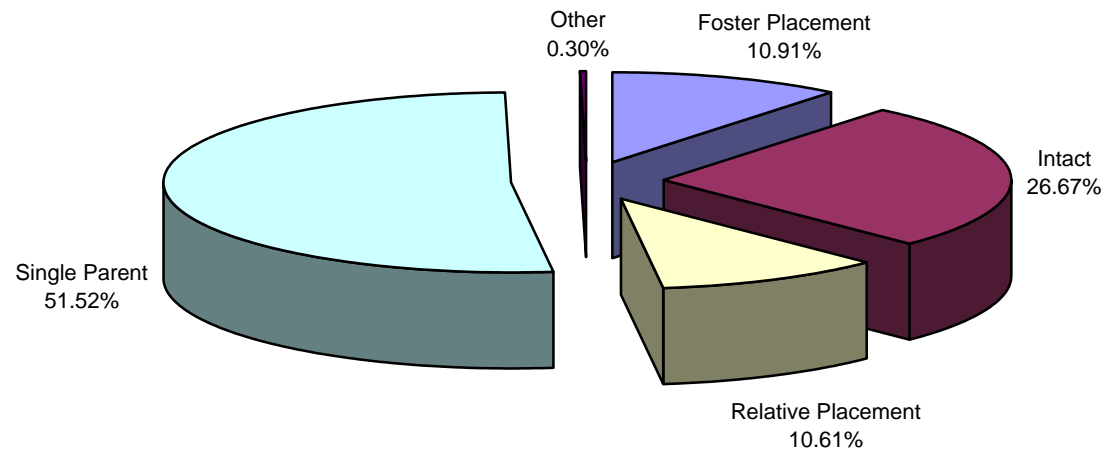
*Diagnosis*  
**2004**



\*Please note that these statistics were created from a representative sample of the population that we served.

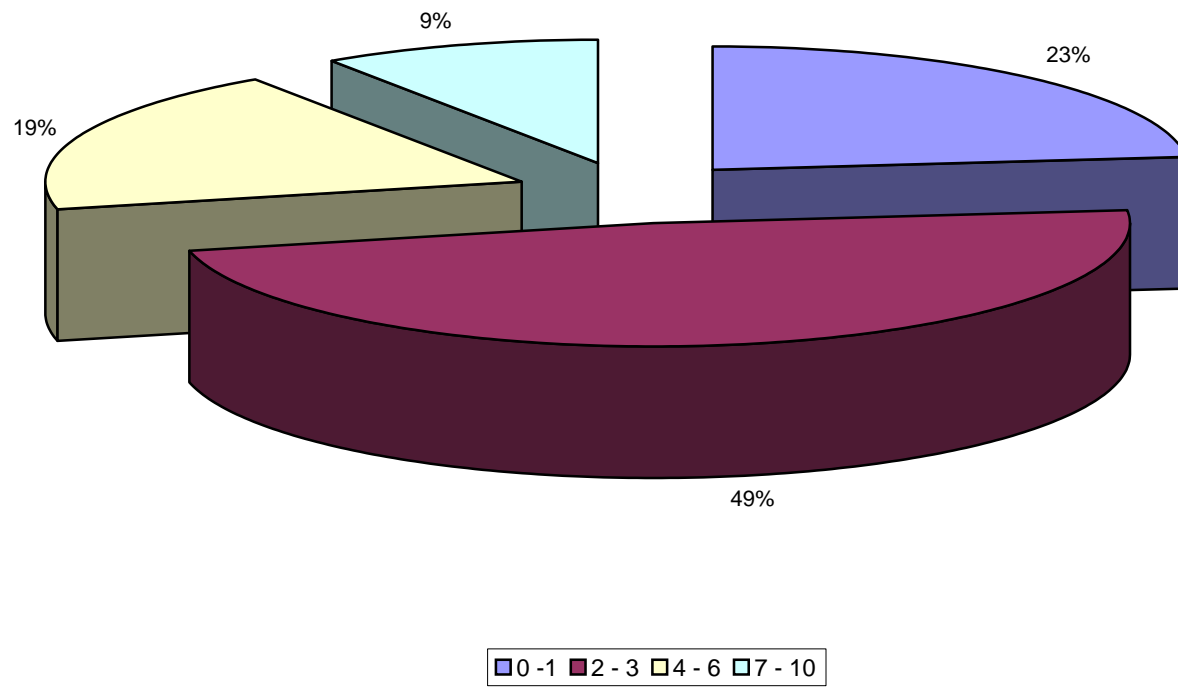
# Program Statistics

*Family Status*  
**2004**



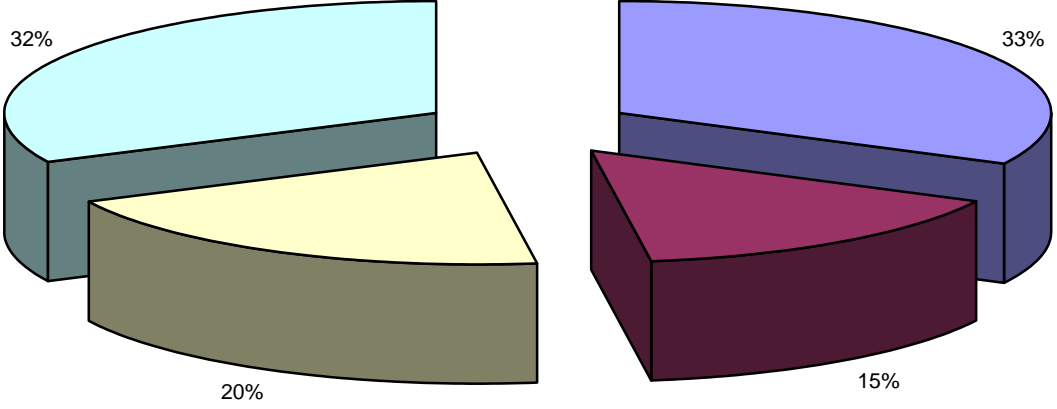
\*Please note that these statistics were created from a representative sample of the population that we served.

**Program Statistics**  
*Family Size (no. of children)*  
**2004**



\*Please note that these statistics were created from a representative sample of the population that we served.

**Program Statistics**  
**Income**  
**2004**



■ 0 - 10K ■ 11 - 15K ■ 16 - 20K ■ 21K+

\*Please note that these statistics were created from a representative sample of the population that we served.